

A Small Intervention Phase 1 of the Crossroads Project

GRACE LA, Assistant Professor
University of Wisconsin-Milwaukee
La Dallman Architects

JAMES DALLMAN, Principal
La Dallman Architects
Masterplan: La Dallman
Architects with Crisman Petrus



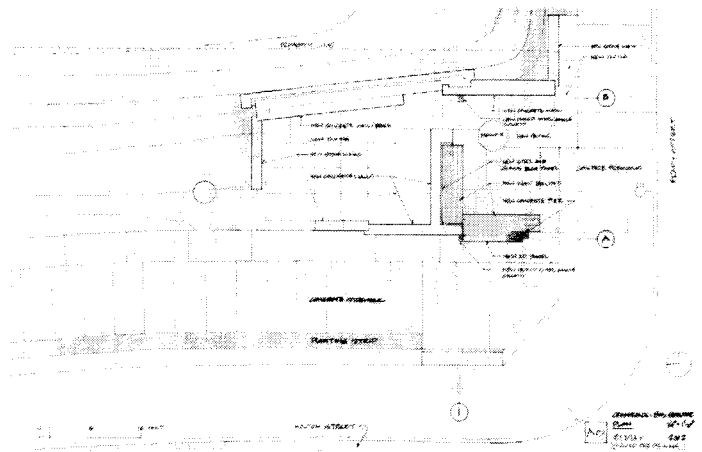
The theme of this year's conference raises questions about what is central and what is marginal to architecture today. Given the rapid and wholesale transformations currently affecting urban and suburban landscapes, it is inevitable that the field of design inquiry ponders a fundamental shift in the concept of site. One outcome of this re-evaluation is that spaces previously understood as marginal can now be seen as important sites with rich potential for engagement in public life. Furthermore, the notion of an architectural site can now expand to include ambiguous/interstitial spaces not previously seen as falling under the purview of design.

This project examines the potential of the ambiguous and abandoned site as defined by the smaller-scaled, leftover spaces buffering infrastructure systems found in the typical American landscape. Through the small intervention of a bus shelter design, located on a residual site in Milwaukee, the project challenges us to re-think the concept of public space, and to unlock the potential of this forgotten space through a series of framing elements made of concrete, wood and steel. The bus shelter design seeks to illuminate the features of the site without obliterating the site's essential qualities, asking a similar question posed by Ignasi de Sola-Morales about how architecture can "act in the *terrain vague* without becoming an aggressive instrument of power and abstract reason."¹ Through the design of this small intervention, we find that the

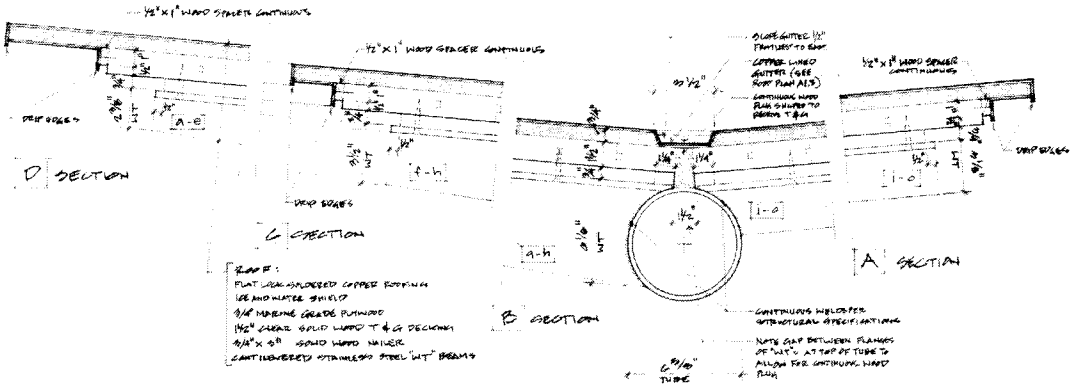
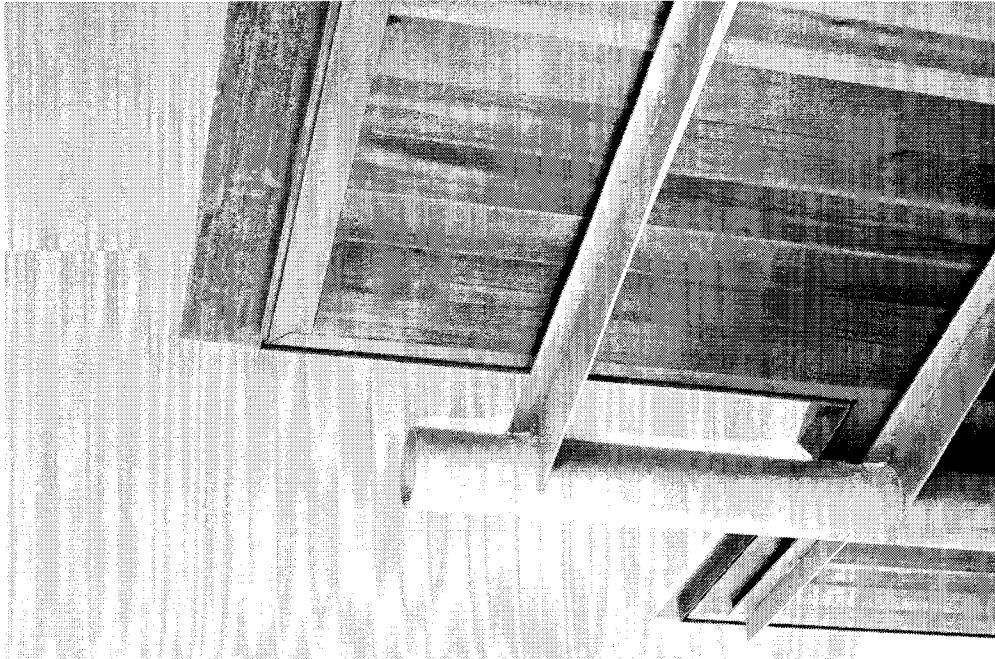
unconsidered space, its impoverished users, and the immobilized client create the fruitful medium through which site may be examined and re-defined. Ironically, it is perhaps because of the unclaimed nature of such sites and their related situations that design work may ultimately be enabled.

NOTES

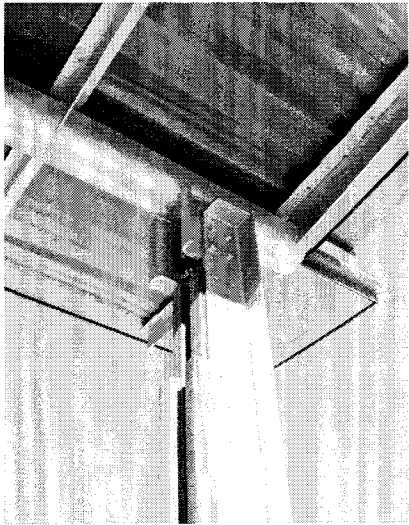
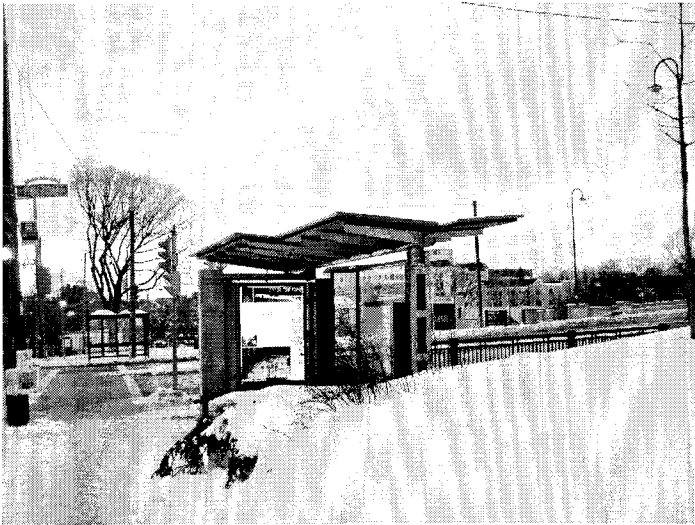
¹ Ignasi de Sola-Morales Rubio, "Terrain Vague," *Anyplace* (Cambridge: MIT Press, 1996), 123.

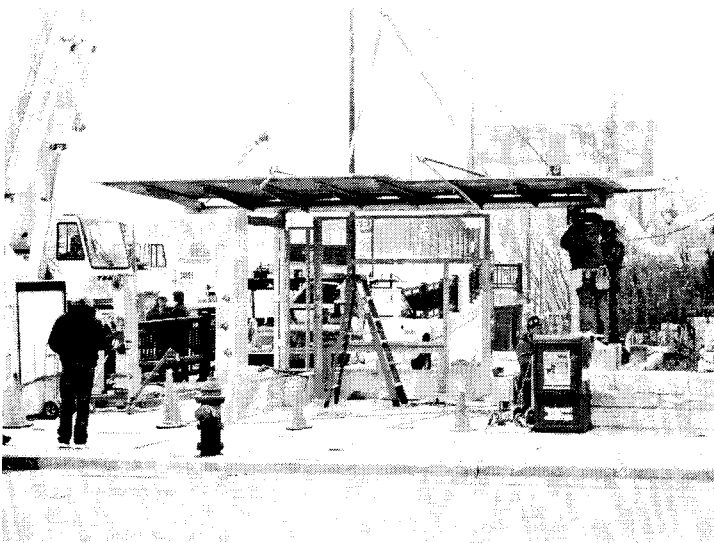
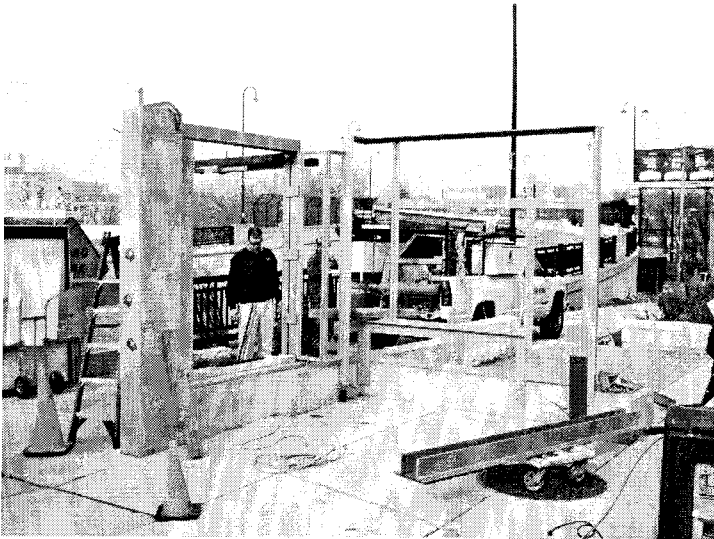
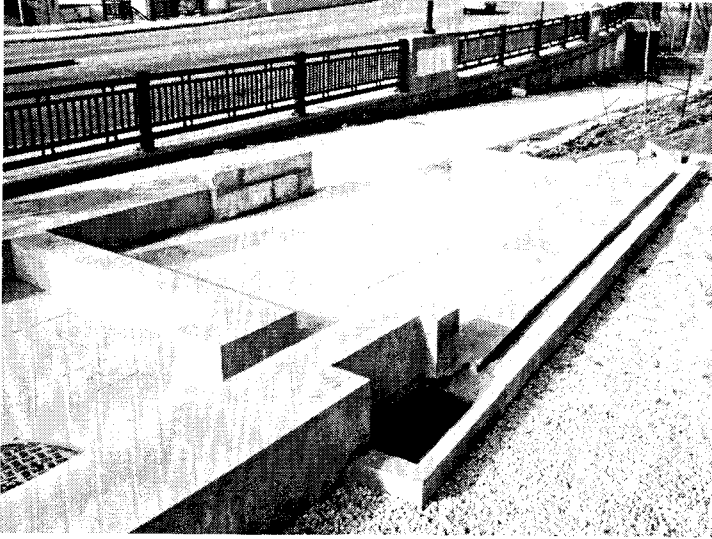


Bus Shelter plan.

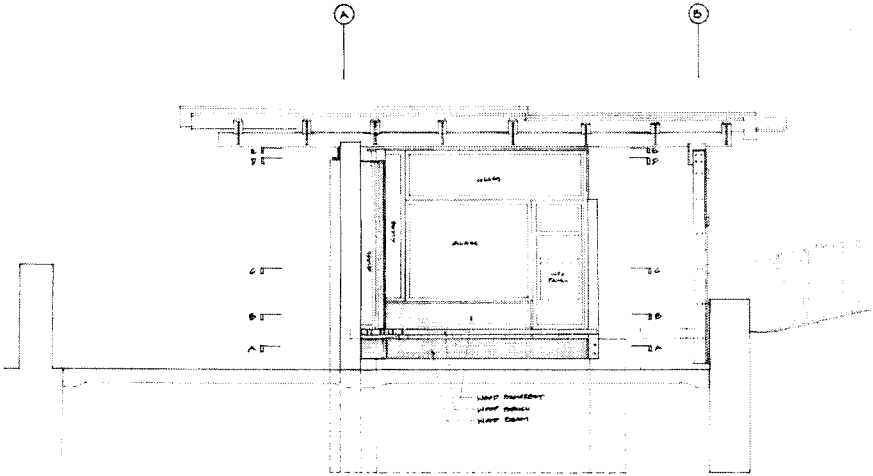


Roof sectional details.





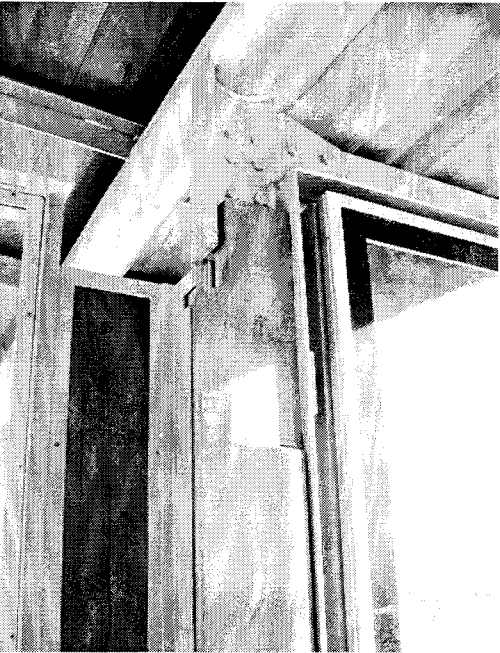
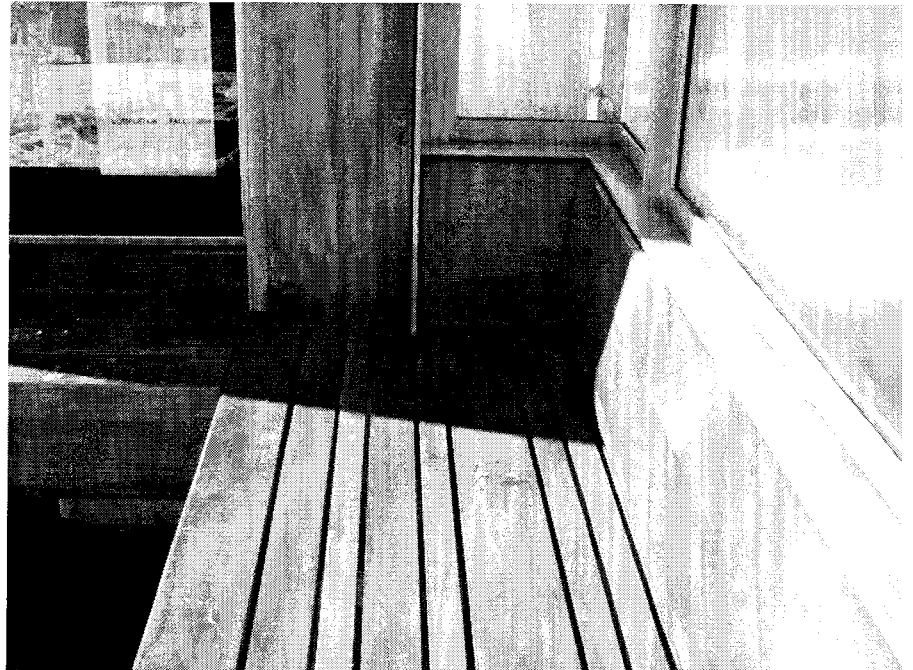
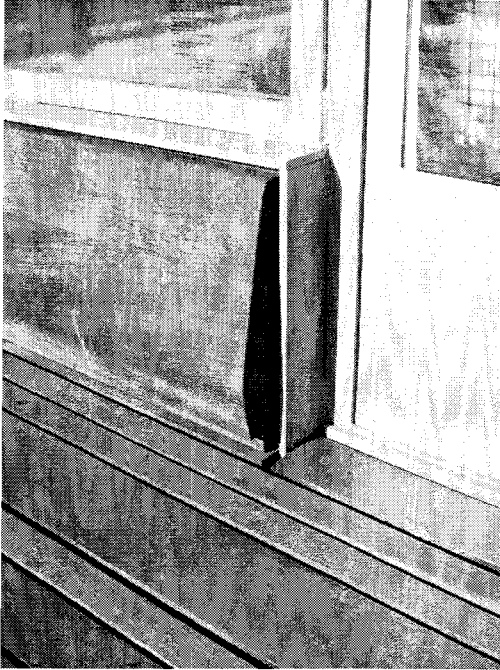
Bus Shelter from Brady Street. Construction sequence illustrating the layering of materials and components.



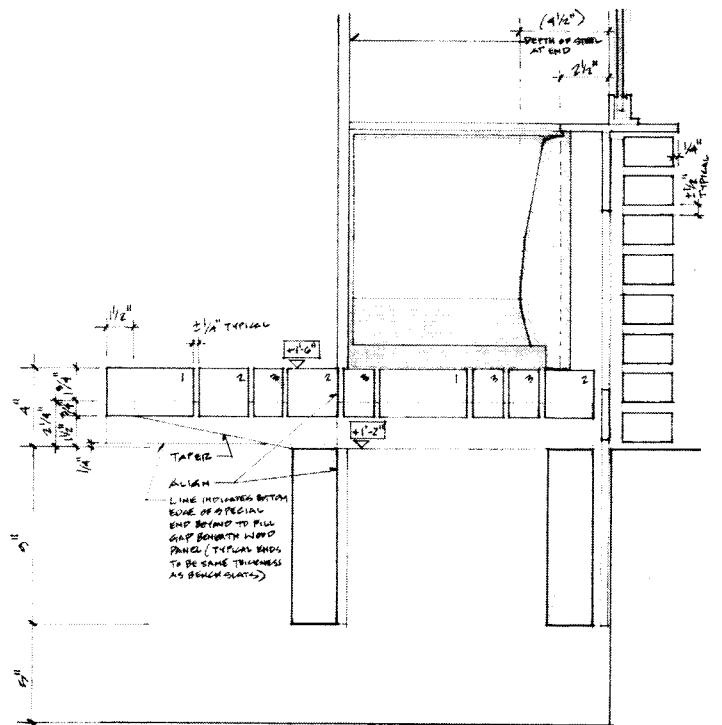
South elevation.



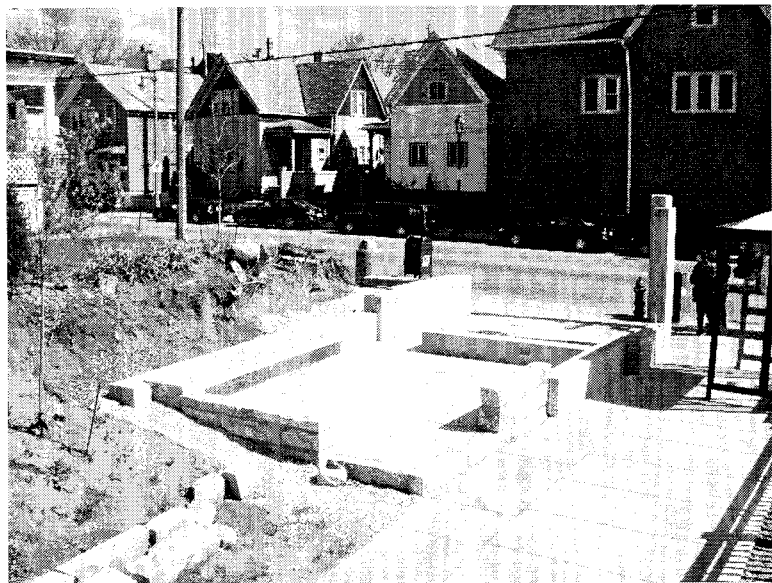
While providing protection from the elements, the Bus Shelter maintains visual connection on all sides.



Details of the highly crafted benches and the integration of wood and steel (above).



Bench sectional detail.



Articulation and integration of the ground plane.



View of Shelter as approached from the Marsupial Bridge.